



PRODUCING QUALITY.

SWEEPERS

AUGERS

CONE SPLITTERS

CRAWLER UNDERCARRIAGE

SNOW BLADES

SALT SPREADERS

WALK-BEHIND SWEEPERS

THERMAL WEED CONTROL

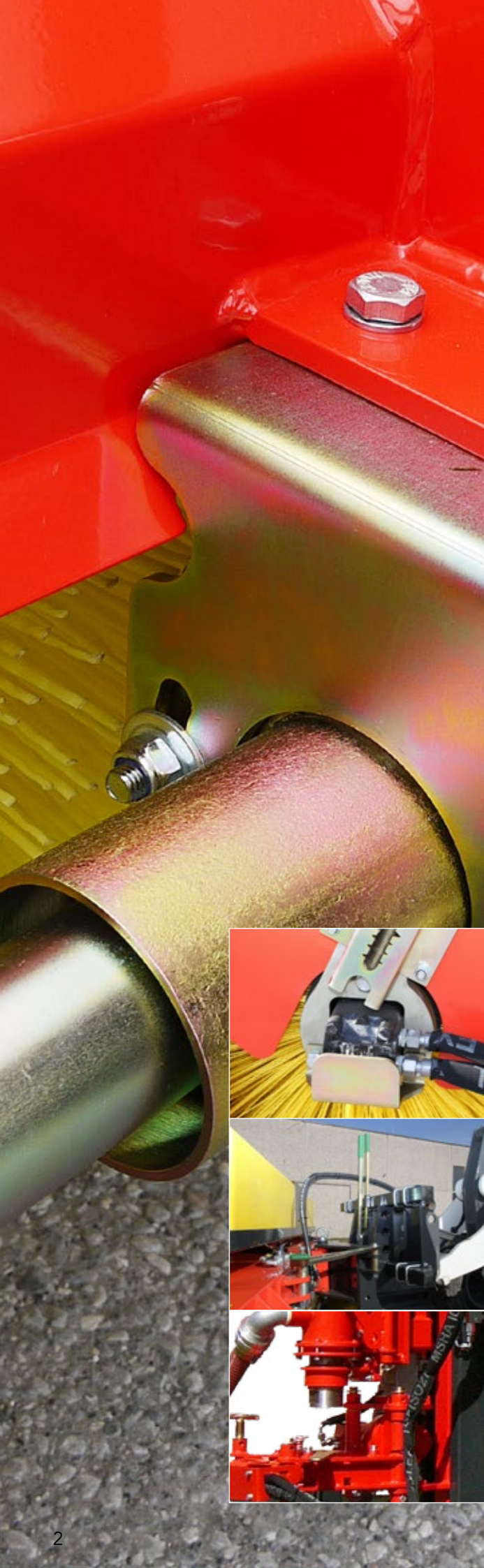
DRILL RIGS



PRODUCT RANGE



www.adler-arbeitsmaschinen.de



ADLER Quality:

All ADLER products meet maximum quality criteria. as it is our aim that our products set the standards in excellence.

Material

We only use the best materials for our products: thicker steel plates, bigger sweeper brushes, better tyres: Problem-free functions and sturdy design are more important to us than scrimping on material.

Manufacturing

We at ADLER weld, bolt and join our products with high precision to ensure maximum durability. We protect key components with top-quality primer & powder coating in all the important places. A perfect finish that lasts for years!

Ideas

The quality of ideas that goes into our products is also essential. We research which products our clients really need and develop them. In doing so, we use a modular approach, so that you can combine our products flexibly and adapt them to your individual requirements.

Technology maturity

From the outset, we develop our products to withstand conditions which go above and beyond standard situations. This means that our machines perform well even under the toughest conditions. We test our products thoroughly and even if they work perfectly, we continue to optimise and enhance them.

Service

It goes without saying that we offer perfect service quality. When you experience our service, you'll be convinced.



Our team:

Our wealth of practical experience means that we know how to get work done. That's why ADLER provides you with the perfect work machines that make your daily work easier and more efficient.



Thomas Schmiemann | Managing Director
The strategist
has detailed product and market knowledge.

☎ +49(0) 2573 979 99 10
✉ t.schmiemann@adler-arbeitsmaschinen.de



Rainer Hackenfort | Managing Director
The lateral thinker
organises the financial areas as an experienced banking business manager.

☎ +49(0) 2573 979 99 20
✉ r.hackenfort@adler-arbeitsmaschinen.de



Tobias Hackenfort | Sales
The all-rounder
with experience in procurement, sales and construction.

☎ +49(0) 2573 979 99 25
✉ t.hackenfort@adler-arbeitsmaschinen.de



Stefan Ostendorf | Sales
The plougher
is valued for his rapid processing and completion in Sales Service.

☎ +49(0) 2573 979 990
✉ s.ostendorf@adler-arbeitsmaschinen.de



Hendrik Fisch | Sales
The clearer
is esteemed for his quick handling in the internal sales team.

☎ +49(0) 2573 97999-23
✉ h.fisch@adler-arbeitsmaschinen.de



The products:

Sweeper K 560	4
Sweeper K 600	6
Sweeper K 750	8
Sweeper K 950	10
Bucket Sweeper KS 600 / 750	12
Scraper Attachment KV-series	14
Auger E-series	16
Cone Splitter SP-series	18
Crawler Undercarriage	20
Snow Blade S-series	22
Snow Blade V-series	24
Salt Spreader ST-E	26
SmartBox	28
Walk-Behind Sweeper HK 5.5 / 6.5	30
Weed Brush HW 5.5 3D	32
Attachment Weed Brush W-series	34
Mode of operation ADLER-Heater	36
ADLER-Heater Flexi 350 / 500	38
ADLER-Heater 500 / 750 E	40
ADLER-Heater 1000 Light	42
ADLER-Heater 1000 / 1400	44
Mounting versions	46
Drill Rigs B-series	48



Jeroen Withag |
Sales Representative Benelux

☎ +31(0)6 247 64 353
✉ j.withag@adler-arbeitsmaschinen.nl



Markus Reckels | Technology
The developer
is valued for his reliable, high-quality work.

☎ +49(0) 2573 979 99 30
✉ m.reckels@adler-arbeitsmaschinen.de



Achim Weinkauf |
Spare Parts Sales
The parts procurer
will supply you with spare parts quickly and simply.

☎ +49(0) 2573 979 99 19
✉ a.weinkauf@adler-arbeitsmaschinen.de

Take it to the street ...

Sweeper K 560

- Mechanically/optionally hydraulically operated sweeper
- Easy sweeper brush adjustment
- Low net weight
- Extremely robust design



Mechanically driven

Profile ADLER-Sweeper K 560

The perfect cleaning solution for your municipality ...

Clear streets and public places easily from dirt, fallen leaves or snow. The ADLER K 560 is the economical choice for municipal use, horticulture or landscape gardening and service providers in the property management sector. Thanks to its lightweight construction, this mechanically driven sweeper (which is also optionally available with hydraulic drive) is perfect for mounting on municipal tractors and small carrier vehicles.

Accessories:

- Hydraulic swivel mechanism for flexible simple sweeping
- Large capacity hopper with wear-resistant sweeping lip, third support wheel and hydraulic emptying system as a standard feature with simple sweeping mode
- Water injection system (120 l) for dust control during sweeping (water tank mounted on rear of vehicle)
- Large rotary side brushes for sweeping edges, perfect for sweeping gutters (hydraulically driven)
- Reinforced heavy-duty wheels Ø 200 mm x 50 mm
- Splash guard mechanically height-adjustable
- Side marker lights, LED, 12/24 V
- Customised colour as per RAL colour chart (standard: RAL 2002)

ADLER-Sweeper K 560		135	150	180
Working width straight/angled	cm	135/128	150/143	180/171
Total width	cm	151	166	196
Brush diameter	mm	560	560	560
Brush speed	1/min.	540-2,200		
Weight, including mount/hopper	kg	190/243	205/261	235/296
Hopper capacity	litres	128	142	173
Area performance	m ² /h	10,800	12,000	14,400



Rotary side brush in use



K 560 with adjustable splash guard



Large angle of breakage in the machine frame – ideal for clearing snow



K 560 with Salt Spreader ST-E in winter maintenance



Standard equipment includes simple sweeping mode for machines with hopper

A clean sweep...

Sweeper K 600

- 600 mm brush diameter
- Simple sweeping mode
- Universal mount system
- Comfortable brush readjustment
- Hydraulic emptying system fitted as standard feature
- 2 large wheels Ø 250 mm
- With overrun protection as standard feature



Universal attachment system

Profile ADLER-Sweeper K 600

A clever solution that doesn't cost the earth ...

Thanks to our modular system, you can also re-fit your ADLER K 600 with items from a large range of accessories at any time.

Accessories:

- Large dirt collector incl. wear-resistant sweeping lip, hydraulic emptying (standard) incl. simple sweeping mode and third support wheel
- Rotary side brushes, 600 mm, for sweeping edges – perfect for sweeping gutters
- Water injection system (120/240 l) for dust control
- Protected internal motor
- Reinforced heavy-duty wheels Ø 250 mm x 80 mm
- Flow control valve 3/4" for an hydraulic oil flow from 75 l/min. to 120 l/min.
- Flow control valve 1" for an hydraulic oil flow of > 120 liters
- Hydraulic swivel mechanism for flexible simple sweeping
- Attachment mount suitable for front plate, DIN 76060, Size 3 or 5, including hydraulic cylinder and levelling system for optimum adjustment to ground surface
- Scraper Attachment KV-series
- Side marker lights, LED, 12/24 V
- Customised colour as per RAL colour chart (standard: RAL 2002)

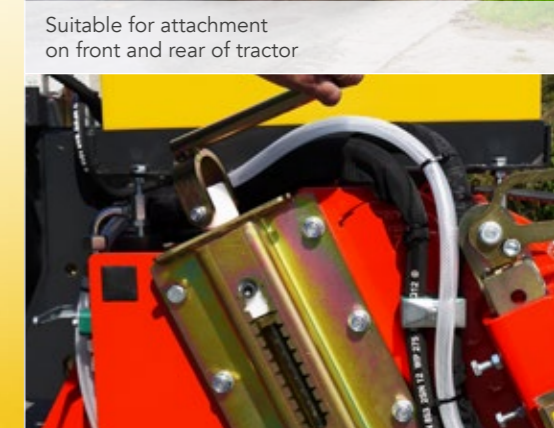
ADLER-Sweeper K 600		135	150	180	210	240	270
Working width, straight/angled	cm	135/127	150/141	180/169	210/197	240/226	270/254
Total width	cm	166	181	210	240	269	299
Brush diameter	mm	600	600	600	600	600	600
Required hydraulic pressure & volume		160 bar / >25 l/min.			160 bar / >40 l/min.		
Weight simple sweeping/hopper	kg	290/378	320/413	345/448	370/472	395/517	420/550
Hopper capacity	litres	191	212	255	297	340	382
Area performance	m ² /h	10,800	12,000	14,400	16,800	19,200	21,600



Optional rotary side brush and water injection system



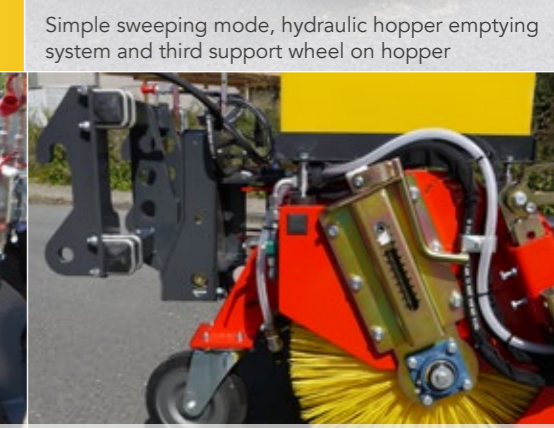
Reinforced, heavy-duty swivel castors



Suitable for attachment on front and rear of tractor



Brushes are continuously adjustable



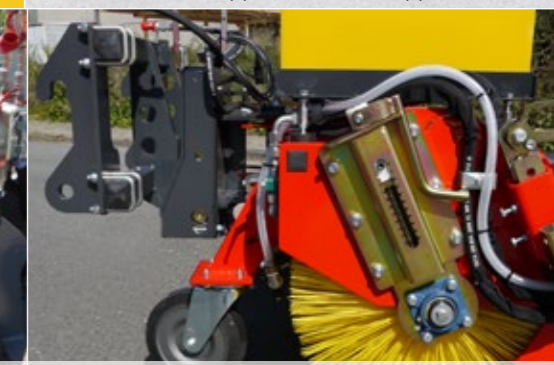
Simple sweeping mode, hydraulic hopper emptying system and third support wheel on hopper



K 600 Scraper Attachment without hopper



Yard loader attachment with 3D levelling system



Wheel loader attachment incl. levelling system via roller guide

... it'll sweep you off your feet!

Sweeper K 750

- 750 mm brush diameter
- 2 heavy-duty wheels Ø 400 mm
- With overrun protection as standard feature
- Internal hydraulic motor
- Suspended sweeper roller
- Universal attachment system
- In-house production



Front and rear attachment possible

Profile ADLER-Sweeper K 750

A clean sweep with ADLER

Further highlights include the high-quality heavy-duty swivel castor, which enable the ADLER K 750 to ride over potholes, railway tracks and rough terrain without any difficulty. As optional extras, you can fit your machine with a large-capacity hopper, use side brushes to sweep curbs and gutters, or easily reduce dust levels during sweeping thanks to our water injection system.

Accessories:

- Large dirt collector incl. simple sweeping mode, incl. wear-resistant sweeping lip and heavy-duty wheels Ø 400 mm x 100 mm
- Rotary side brushes for sweeping close to the edge – perfect for sweeping gutters
- Water injection system 240 l for dust control
- Flow control valve 1" for hydraulic fluid volumes > 90 l/min
- Hydraulic angling for flexible simple sweeping
- Attachment front plate, DIN 76060
Size 3 or 5, including hydraulic cylinder and levelling system for optimum adjustment to ground surface
- Scraper Attachment KV-series
- Side marker lights, LED, 12/24 V
- Customised colour as per RAL colour chart (standard: RAL 2002)

ADLER-Sweeper K 750		210	240	270	300	330
Working width straight/angled	cm	210/198	240/228	270/257	300/285	330/313
Total width	cm	233	262	292	321	351
Brush diameter	mm	750	750	750	750	750
Required hydraulic pressure & volume		160 bar / >35 l/min.			160 bar / >40 l/min.	
Weight, including mount/hopper	kg	499/690	596/800	674/890	748/995	875/1,135
Hopper capacity	litres	390	450	500	555	610
Area performance	m²/h	16,800	19,200	21,600	24,000	26,400
For carrier vehicles with operating weight	t	3+	4+	5+	6+	6+



Optional rotary side brush and 240-l water tank



K 750 suitable for front and rear attachment



Simple sweeping mode and 750 mm brush diameter as standard features



K 750 with hopper and Scraper Attachment



Hydraulic hopper emptying system



Three large wheels 400 mm x 100 mm

... It's size-dependent!

Sweeper K 950

- **Huge surface performance due to the combination of 950 mm brush diameter and a working width of up to 390 cm**
- **Heavy-duty hydraulic package: incl. oil flow control valve 1 1/4" and back-pressure valve against over-travel, up to a hydraulic flow rate of 400 l/min**
- **Large support wheels Ø 460 x 125 mm (solid rubber))**
- **Short attachment due to intelligent mounting system with 3D compensation and integrated hydraulic swivel**
- **Suspended brush: Top sweeping results, long brush service life**



Incl. SmartBox as standard equipment

Profile ADLER-Sweeper K 950

The ADLER for huge surface performance!

The K 950 from ADLER is one of Europe's largest sweepers. With a brush diameter of almost one metre, rotational speeds are generated which even under the most extreme conditions – as, for example, use in quarrying – ensure clean results for your operation. Thanks to its 46 cm large heavy-duty swivel castors, the ADLER K 950 also masters rough terrain problem-free. The highly comfortable control of all its hydraulic and electric functions from the cabin will inspire you. For example, you can use the series hydraulic swivel or simply only fold the side brush down and switch it on. A heavy-duty hydraulic package, incl. oil flow control valve 1 1/4" and back-pressure valve against overtravel will fully secure your machine up to an hydraulic flow rate of 400 l/min.

Accessories:

- High-volume dirt collection hopper with two integrated heavy-duty wheels (Ø 460 x 125 mm) including electrically switchable simple sweeping mode and wear-resistant sweeping lip
- Hydraulic foldable and connectible side brush, Ø 900 mm (can be used on the left- or right-hand side)
- 600 litre water injection system with two electrical pumps (12/24 volt)
- Splash guard specially developed for the wide working width (adjustable)
- Third support wheel - advantageous for independent sweeping
- Side marker lights, LED (12/24 volt) and/or warning flags
- Customised colour according to RAL colour chart (standard: RAL 2002)

ADLER-Sweeper K 950		300	330	360	390
Working width straight/angle	cm	300/275	330/304	360/334	390/363
Total width	cm	327	357	386	416
Brush diameter	mm	950	950	950	950
Required hydraulic pressure & volume		160 bar / >65 l/min			
Weight, including mount/hopper	kg	2010/2660	2055/2725	2100/2790	2150/2860
Hopper capacity	litres	1,100	1,210	1,320	1,425
Area performance	m²/h	24,000	26,400	28,800	31,000
For carrier vehicles with operating weight	t	12+		15+	



If you go for a water-spray system, then take the right one: the side brush is always equipped with a spray nozzle.



All-in: hydraulic angling, 3D levelling, height indicators and the innovative ADLER mounting bracket.



The function "simple sweeping" can be activated by a remote control.



Optional hydraulic side brush, can be switched on/off (Ø 900 mm).



The particular "deep" hopper increases sweeping capacity. Of course, incl. hydraulic emptying (standard).



Four big, stable wheels (460 x 125 mm) guarantee a perfect bottom guidance.

Keep things spinning ...

Bucket Sweeper KS 600/750

- 600 or 750 mm brush
- Wear resistant cutting edges & welded armoured steel naps
- Lateral cutting edges (angular arrangement)
- Convenient broom adjustment
- Interior hydraulic motor, protected on the sides



Profile ADLER-Bucket Sweeper KS 600 / 750

The ultimate street sweeper.

The Bucket Sweeper KS 600 / 750 demonstrates its true strengths when used under tough road construct a powerful and deep sweeping of slotted cracks.

Easily interchangeable wear resistant cutting edges with welded armoured steel naps, fitted at an angle, are standard and are to ensure a long service life of the bucket sweeper. The typic high-quality cathodic dip-coating (KTL) and powder coating make this a neat piece of work.

Robust, durable and versatile, the KS 600 / 750 is the ideal all-rounder for daily use under extreme conditions.

Accessories:

- Steel guide rollers (Ø 125 mm) on the rear of the bucket
- Hydraulic folding
- Adjustable dust flap
- Rotary side brush
- Water injection system

ADLER-Bucket Sweeper KS 600 / 750		150	165	180	210	240
Working width	cm	150	165	180	210	240
Total width	cm	174	189	204	234	264
Brush diameter	mm	600	600	600	750	750
Required hydraulic pressure & volume		160 bar / >30 l/min.				
Weight, including bucked	kg	419	460	502	618	706
Bucked capacity	Litre	388	426	465	590	674
Area performance	m²/h	9,000	10,100	10,900	12,600	14,400



Adjustable dust flap



Hydraulic folding system (optional)



Emptying system



Compact design



KS 600 mounted on a wheel loader
incl. water-spray system



Interchangeable wear-resistant cutter

A truly effective scraper

Scraper Attachment KV-series

- **Frees persistent dirt**
- **Versatile use**
- **Wear resistant scraper bars**
- **Suspended scraper bars**



Profile ADLER-Scraper Attachment KV-series

Show dirt what you've got.

Business before pleasure! Don't forget about scraping after the job has been done! Debris and spillage on roads due to harvesting and other work in the fields pose a serious safety hazard. As the person responsible, you are legally required to take corrective action in such cases. The ADLER-Scraper Attachments KV-series offer an optimum solution. The KV-series is ideal for use on bends, roads, lanes, paths and open spaces – any place where stubborn dirt from soils and clay earth makes it difficult to sweep.

With the KV-series, you'll always achieve a clean end result no matter whether you mount the Scraper Attachment in front of your tractor or wheel loader, combine it with one of our sweepers or you scrape at the front and sweep at the rear while driving your tractor.

Accessories:

- Hydraulic swivel for direct attachment
- Mounting options for direct attachment:
3-point hitch or universal attachment for wheel, telescopic and front loaders
- 3rd support wheel for optimum floor guidance

ADLER-Scraper Attachment KV-series	135	150	180	210	240	270	300	330
Direct attachment for tractors, wheel loaders or other carrier vehicles	-	-	-	✓	✓	✓	✓	✓
KV-series attached to K 600 Sweeper without hopper – only possible in simple sweeping mode	✓	✓	✓	✓	✓	✓	✓	✓
KV-series attached to K 750 Sweeper, on option with hopper	-	-	-	✓	✓	✓	✓	✓



Direct attachment to tractors or wheel loaders



KV-series Scraper Attachment with third support wheel



Sweeping machine K 750 (simple sweeping) and scraper



The suspended scraper bar elements optimally adapt to uneven road surfaces



With ADLER everything goes well: sweeping machine with dirt collector, scraper and side brush



Combination scraper/sweeping machine K 750 with dirt collector



Full of drive ...

Auger E-series

- Compact design
- Low total height
- Highly efficient
- Maintenance-free usage
- Sturdy design
- Versatile in use



Profile

ADLER-Auger E-series

Powerful performance. The Auger Range for every carrier vehicle.

The ADLER-Auger E-series is equipped with powerful orbital engines, which are protected by a sturdy enclosure. The EG 250 and EG 500 models also feature additional transmission. The machine is operated using a single-action or dual-action hydraulic control circuit.

The auger are mounted directly using the quick hitch mechanism or forklift forks on yard loaders or smaller wheel loaders. In the case of mini-excavators, the quick hitch coupler or a bolt attachment are used to mount attachments.

The universal joint in the auger attachment ensures that drilling is always vertical no matter how the carrier vehicle is positioned on the ground.

The auger drills are equipped with exchangeable heads and blades suitable for light to medium soils. The augers are also easy to change using a bolt fixing mechanism. You can also work with medium and heavy soils quickly and effectively using our heavy duty auger blades and heads.

Accessories:

- Pressure relief valve

ADLER-Augers E-series	E 50	E 100	E 165	EG 250	EG 500
Drive	Hydraulic			Hydraulic with transmission	
Auger diameter mm	up to 220	up to 300	up to 500	up to 750	up to 900
Required hydraulic pressure & volume	160 bar / >20 l/min.		160 bar / >30 l/min.	200 bar / >50 l/min.**	200 bar / >75 l/min.**
Torque daNm	50	100	165	250	500
Pressure relief valve	available as an option			included	
Weight* kg	105	118	131	180	191

* Weight without mounting system ** For excavator with an operational weight from 10 t a leakage pipe will be indispensable



EG 500 Geared Auger



Auger on mini-excavator



Auger with yard/wheel loader attachment

Universal joint and front bearings featured as standard



Auger drills and different qualities in standard and heavy-duty design

Powerful splitting ...

Cone Splitter SP-series

- Compact design
- Splitter cone made of tempered steel
- With double-start buttress thread
- Highly efficient
- Practical stacking function
- Versatile in use



Profile ADLER-Cone Splitter SP-series

To the point: how you cut bulky timber into pieces.

You can split tree roots, chop firewood or produce fencing posts. You can even move stacks of timber and split wood easily in a single work process. ADLER-Cone Splitters SP-series allow you to complete such heavy work effortlessly without straining your back. The ADLER-Cone Splitter series features high-performance orbital motors and an additional front bearing with grease lubrication. The machine is operated using a single-action or dual-action hydraulic control circuit.

The Cone Splitters are mounted directly on excavators using the quick hitch mechanism or attached with bolts.

The Cone Splitter is made of tempered steel and features a double-start buttress thread which penetrates each piece of wood autonomously. This produces a powerful splitting effect which provides excellent results, even on carrier vehicles with low hydraulic power.

Accessories:

- Flange for auger drill and weed brush
- Auger drill (standard / heavy duty)
- Weed brush

ADLER-Cone Splitter SP-series	SP 100	SP 130	SP 165	SP 200
Drive	Hydraulic			
Required hydraulic pressure & volume	180 bar / >30 l/min.	180 bar / >50 l/min.	180 bar / >60 l/min.	180 bar / >80 l/min.
Torque daNm	100	130	165	200
Pressure relief valve	Featured as standard			
Splitting attachment Ø/length mm	135 / 285	135 / 285	160 / 340	160 / 340
Splitting capacity (depending on wood type)	1 m to about 3 m in length Ø to 0.6 m	1 m to about 4 m in length Ø to 0.8 m	1 m to about 4 m in length Ø to 1.0 m	1 m to about 5 m in length Ø to 1.0 m
Weight* kg	121	126	137	142

* Weight without mounting system



highly cost-effective



Splitting and stacking in a single work process



Effective work process even for smaller carrier vehicles



Penetrates each piece of wood autonomously



Equally suitable for weed control

Go to different terrain now!

Crawler Undercarriage F-series

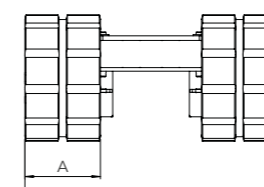
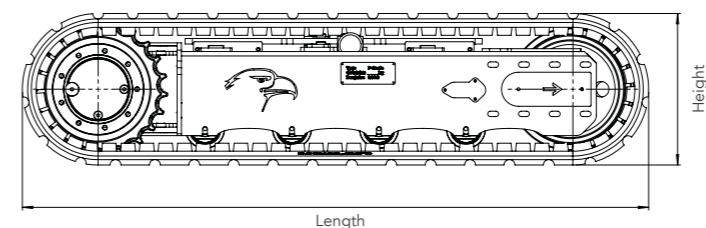
- Perfectly suitable for industrial, agricultural and construction machinery
- Choose between a rigid or an extendable undercarriage incl. hydraulic telescoping
- Very robust design
- Two speed levels
- Standard equipment includes four lashing points
- On option, customer-specific adaptations possible



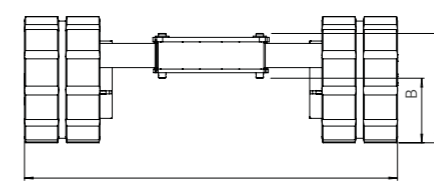
Profile ADLER-Crawler Undercarriage F-series

We don't like gridlocked situations!

The stable and long-life ADLER-Crawler Undercarriages are the ideal solution and advantage where wheels can squeeze or damage the ground surface because of punctual pressure. They allow high stability and manoeuvrability in multiple application areas. No matter what – Drill Rig, lifting platform, crane or harvester – the extendable ADLER-Crawler Undercarriages make your machine a flexible off-roader.



Max. width



Max. width

ADLER-Crawler Undercarriage F-series		F 17	F 25	F 30	F 35	F 45
Load capacity incl. undercarriage	kg	1,700	2,500	3,000	3,500	4,500
Load capacity excl. undercarriage	kg	1,380	2,110	2,550	2,815	3,660
Weight	kg	320	390	450	685	840
Length	mm	1,344	1,446	1,699	1,728	1,903
Min. width	mm	725	775	780	835	1,000
Max. width	mm	1,125	1,175	1,180	1,235	1,400
Height	mm	336	336	336	418	418
Chain width A	mm	180	230	250	250	300
Pass-over height B	mm	182	182	168	232	218
Height in extended position C	mm	286	289	285	349	358
Speed	km/h	2.8	2.8	2.8	2.9 / 5.1	2.9 / 5.1
Max. oil flow per motor	l/min	20	20	20	35	35
Max. torque value per motor	Nm	1,443	1,443	1,443	3,317 / 1,864	3,317 / 1,864
Max. pressure	bar	180	180	180	180	180



ADLER-Drill Rig on ADLER-Crawler Undercarriage



A stable steelwork assures long durability of the the extendable ADLER-Crawler Undercarriages



The centre piece of the undercarriage has many fixing points for customer-specific use.



All undercarriages can be manufactured in a rigid version or with hydraulic telescoping.



Quality motors assure a good torque value and guarantee the excellent ADLER performance, as usual.

Ready for snowy weather ...

Snow Blade S-series

- up to 115 cm high and 330 cm wide
- Material thickness 5 - 6 mm steel plate
- Anti-icing spring flaps
- Adjustable support wheels
- Edge protections
- Large network of suppliers
- In-house production



Profile ADLER-Snow Blade S-series

Next winter is certain to come!

And also the next ... and the one after next ...

With the ADLER-Snow Blade S-series, you'll be ideally prepared for clearing snow and ice for many years to come.

We've designed the spring flap system of the clearing lip in a manner that it cannot ice over. This guarantees excellent clearing results in even the toughest weather conditions and round-the-clock use. Moreover, the time-consuming task of de-icing the spring flaps while you're on the road also becomes unnecessary. If you choose our optional hydraulic angling system the driver can also easily angle the snow blade from the driver's seat during clearing.

Accessories

- Hydraulic angling allows you to clear snow effectively without leaving the driver's seat
- Pressure relief valve for overload protection
- Extra heavy-duty wheels
- Alternative wear lips:
 - rubber and corundum lip
 - steel lip
- Side marker lights, LED, 12/24 V with reflective strips, left/right
- Holders for warning flags
- Warning flags, made of flexible and rounded material
- Customised colour as per RAL colour chart (standard: RAL 2002)

ADLER-Snow Blade S-series	135	150	180	210	240	270	300	330
Working widths (straight/angled up to 30°) cm	135/120	150/134	180/160	210/187	240/214	270/241	300/263	330/289
Height mm	650	650	800	800	800	800	1,150	1,150
Wheels Ø/mm	200x50	200x50	200x80	200x80	200x80	200x80	250x80	250x80
Weight kg	195	210	336	366	393	421	594	628



Text

Anti-icing spring flaps incl. edge protection (standard), various clearing lips on option



S-series attached to a wheel loader



Working widths from 135 cm to 330 cm



Snow blade, material thickness 5-6 mm steel plate



Universal mount system with hydraulic pivot mechanism (with two hydraulic cylinders)



Height-adjustable support wheels (200 x 80 mm)

Cleared ...

Vario Snow Blade V-series

- Up to 65 or 90 cm high and 135 to 330 cm wide
- Two swivel-mounted folding wings
- Hydraulic side swivel mechanism
- Anti-icing spring flaps
- Edge protections
- High-quality primer & powder coating
- Adjustable support wheels



Profile

ADLER-Vario Snow Blade V-series

The Snow ADLER for next winter!

We equip the V-series with edge protections, anti-icing spring flaps (made of spring steel \varnothing 10 mm) and high-quality, height-adjustable support wheels.

By the great variety of flexible hitch systems for communal tractors and yard loaders you can apply the V-series snow blades individually and in a number of ways in winter road maintenance. The integrated levelling system also ensures consistently effective clearance results.

If your carrier-vehicle does not have a second double-acting hydraulic control circuit, you can make the desired swivel adjustments of your snow blade by means of an electric switch valve, which is available on option.

Accessories

- Reinforced, heavy-duty wheels
- Electric switch valve for swivel operation
- Side marker lights, LED, 12/24 V with reflective strips, left/right
- Holders for warning flags
- Warning flags, made of flexible and rounded material
- Customised colour as per RAL colour chart (standard: RAL 2002)
- Comfort control system: At the push of a button, you can adjust - in straight position - the wings from right/left to Y or V shape.

ADLER -Vario Snow Blade V-series	135	150	180	210	240	270	300	330
Clearance widths in V, Y and diagonal position (at 30° angled position) cm	121	129	155	190	215	235	258	289
Blade height outside/inside mm	550/650	550/650	550/650	750/900	750/900	750/900	750/900	750/900
Wheels \varnothing /mm	180 x 50	180 x 50	180 x 50	200 x 80	200 x 80	200 x 80	200 x 80	200 x 80
Weight (without mount) kg	185	190	200	353	389	412	465	511



V-series attached to yard loader



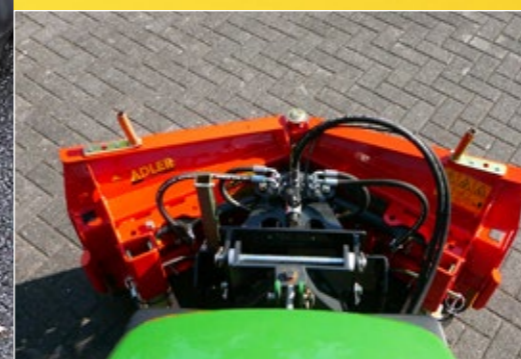
Also available in working widths from 135 cm up to 330 cm



Electric switch valve with overload protection provided by two pressure relief valves and nitrogen bubble



Yard loader with levelling system and parking stand



All possible clearance configurations in V, Y and diagonal position



Breaking the ice!

Salt Spreader ST-E

- 12-volt operation
- **Smartphone control via Bluetooth, no laying of control cable required**
- **With agitator and intelligent anti-blockage control as standard**
- **Spread width of up to 6 m**
- **Rotational speed and dosage regulated via smartphone as standard**
- **Several universal attachment systems**
- **Completely made of stainless steel**
- **Specially manufactured PE salt tank**



Cable is history!

Featured as standard:

Including smartphone for control via Bluetooth

Featured as standard:

Rotational speed & spread rate controlled from the driver's cab.

Profile

ADLER-Salt Spreader ST-E

Safety for winter roads!

The ST-E Salt Spreader comes with a 120- or 200-litre plastic composite tank held in a sturdy frame. The tank is equipped as standard with an additional gear drive agitator, a water-tight hinged lid and a leak-free drain plug. Rotational speed and spread rate can be conveniently controlled from the driver's seat. The ST-E Salt Spreader is also fitted with a powerful 12 volt geared motor for the spreader plate. The working width is continuously adjustable from 1 to 6 m.

Attachment systems

- Universal attachment system for fork lift trucks and yard and wheel loaders is height adjustable and features tilt function
- Cat. I/II three-point hitch
- Hitch triangle
- Pick-up
- Scharmüller / Rockinger hitch

Accessories

- Speed-dependent, GPS-based quantity control
- LED lighting set, 12/24 V, as per traffic regulations

ADLER-Salt Spreader	ST-E 120	ST-E 200
Tank capacity l	120	200
Speed adjustment	Variable	Variable
Spreader plate motor	Geared motor with splash water protection	
Separate agitator (fitted as standard)	Driven by geared motor	Driven by geared motor
Casing	V2A/V4A stainless steel, 2.5 mm	V2A/V4A stainless steel, 2.5 mm
Weight without mount kg	48	56
Area performance m ²	e.g. 60,000 m ² per hour 10 km/h	

Salt spreader attached to a yard/wheel loader

Universal mount system, hinged

Salt Spreader with side panel support

Volume of 120 or 200 litres

Rotational speed and spread rate can be conveniently adjusted from the driver's cab via smartphone

Spread range up to 6 m, regulated by rotational speed

Developed by ADLER, the beater and agitator system prevents bridging in the road grit

NEW



Smartly connected...

SmartBox

- Easy control of all implements via Bluetooth - also possible for products of other manufacturers
- Uncomfortable cables are no longer in your way!
- Saving of costs and time, because the laying of control cables is omitted
- Plug & Play, the ADLER-App is being pre-installed on the smartphone

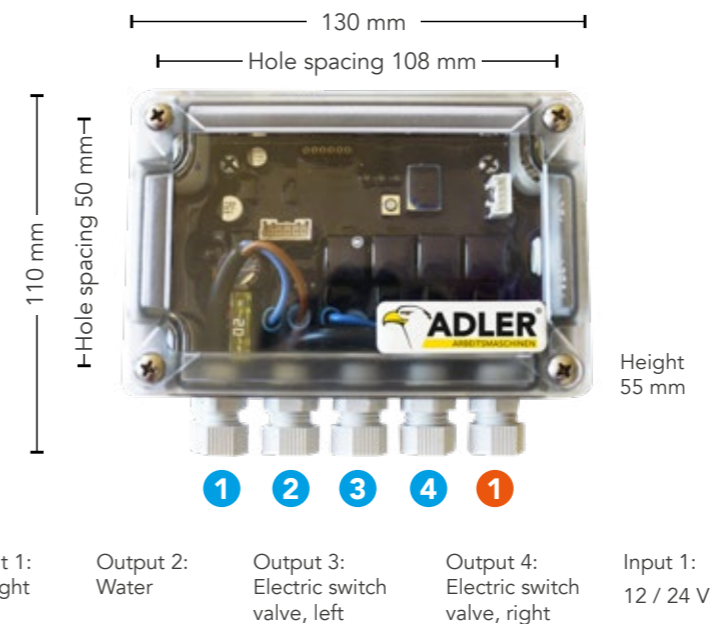


Also for control of products of other manufacturers!

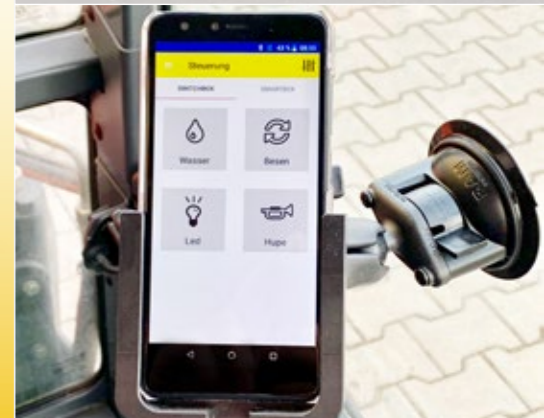
Developed
& produced in
Germany

Profile ADLER-SmartBox

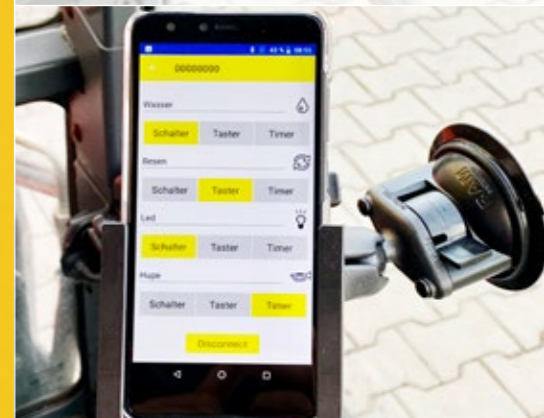
- Easy control of all implements via Bluetooth - also possible for products of other manufacturers
- Saving of costs and time, because the laying of control cables is omitted
- Damaged cables will no longer be a problem!
- Easy programming of all functions in the pre-installed app
- ADLER-SmartBox including Smartphone and ADLER-App for control via Bluetooth
- (on option, also without Smartphone)
- Up to four users can be connected in a SmartBox.
- In the App all functions can be configured according to your requirements.
- All users can be controlled as a switch-, feeler- or with time function.
- 12- or 24 V feed pipe required



Easy control of all implements via Bluetooth, also possible for products of other manufacturers



Startup screen of Smartphone control



Freely programmable switch, feeler or timer



Via Smartphone and the ADLER-App you can control simultaneously several front- or rear-mounted implements.

Make sweeping changes!

Walk-Behind Sweeper HK 5.5 / HK 6.5

- 75/100 cm working width
- Hydraulic drive for driving and sweeping modes
- Differential transmission as a standard feature
- large drive wheels
- Rod steering system instead of Bowden cables
- Stepless traction drive backwards/forwards on HK 6.5



Profile ADLER-Walk-Behind Sweeper HK 5.5 / HK 6.5

For professional use!

Over the years, this sweeper has also proven itself to be a great help in winter: smaller amounts of snow can be quickly cleared with a snow brush whereas the easy-to-attach snow blade allows you to eliminate larger amounts of snow as well. In designing this sweeper, we have avoided using cold-sensitive Bowden cables for the traction drive and installed a high-quality rod steering system instead. This means our HK-series is always ready for use, even at sub-zero temperatures. The sweeper's powder coating, robust manufacturing and low maintenance hydraulic drive guarantee a long service life.

Accessories:

- Hopper with support wheels
- Hydraulic rotary side brush
- Snow blade with rubber lip
- Snow chains
- Sully

ADLER-Walk-Behind Sweeper	HK 5.5	HK 6.5
Working width (straight) cm	75	100
Brush drive	Hydraulic	Hydraulic
Brush diameter mm	320	320
Brush adjustment	left/right/straight	left/right/straight
Direction of brush rotation	rotates in one direction	rotates in both directions
Traction drive	hydraulic/continuously adjustable (forwards) 0 – 3.7 km/h	hydraulic/continuously adjustable (forwards and backwards) 0 – 4.2 km/h
Transmission	differential	differential
Drive motor	Honda GCV 160, 5.5 hp (4.0 kW)	Honda GX 200, 6.5 hp (4.8 kW)
Tyres	480/4.00-8	480/4.00-8
Area performance m ² /h	2,800	up to 4,000
Finish	powder coating	powder coating



Hydraulic rod steering system and stepless traction drive



Walk-Behind Sweeper with rotary side brush



Sweeping with a hopper



HK 5.5 winter maintenance



Honda motor GX 200



Walk-Behind Sweeper with a snow blade



Weed Brush HW 5.5 3D

100%
without
chemistry

Profile ADLER-Weed Brush HW 5.5 3D

- *Hydraulically driven Weed Brush for convenient weed clearing*
- *Conveniently adjustable 3D brush head*
- *Environmentally friendly cleaning of paths and surfaces without pesticides*
- *Clockwise / anti-clockwise sweeping as a standard feature*
- *Ideal for horticulture, agriculture and municipal use*

Accessories:

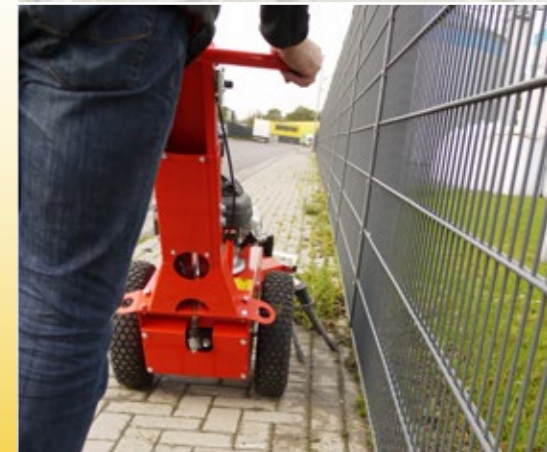
- **Universal brush** (flat wire/wave-wire) – recommended as standard for most places
- **Steel wire rope** (plaited) – excellent for surfaces with dense weed growth
- **Flat wire brush** – eminently suitable for removing mosses and smaller weeds
- **Radial sweeper** – effective for heavy and stubborn dirt with a working width of 70 cm
- **Adjustable protective guard** – against flying fragments, like dirt and little stones

Technical specifications:

Brush diameter	60 - 70 cm depending on bristles
Brush adjustment	via spindle with crank lever
Direction of brush rotation	rotates in both directions
Drive motor	Honda GCV 160, 5.5 hp (4.0 kW)
Wheels	480/4.00-8 tyres
Finish	powder coating
Emergency stop switch	Featured as standard
Support wheel	Featured as standard



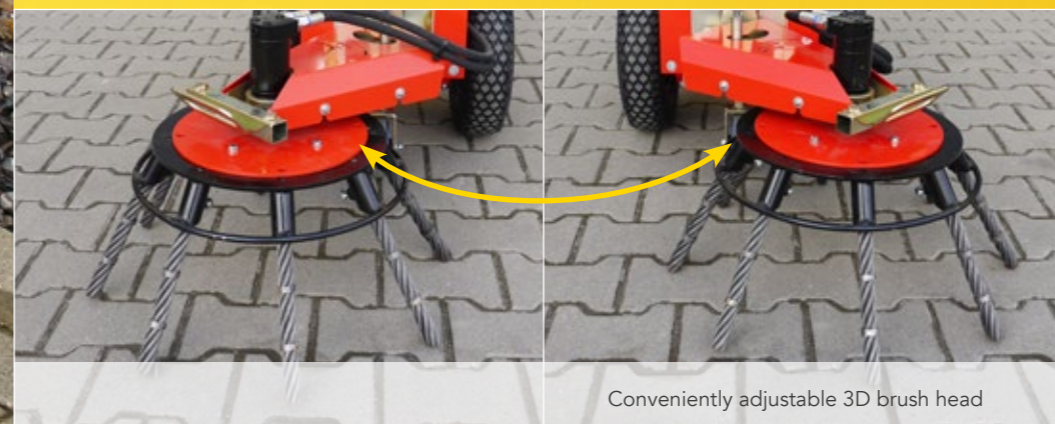
Depending on the area of application the support wheel can be comfortably folded in and out.



Easy to work close to edges.



Stepless adjustment of handlebar height



Conveniently adjustable 3D brush head





Weed Brush Attachment W-series

incl. radio remote control

100%
without
chemistry

KTL
& powder

Developed
& produced in
Germany

Profile ADLER-Weed Brush Attachment W-series

- High-performance, hydraulically driven weed brush with brush 800 mm in diameter
- Perfect for clearing large areas of weeds quickly
- Universal attachment for all standard carrier vehicles
- Available as a basic or professional machine with many hydraulic functions and radio remote control

Accessories:

- Hydraulically adjustable swivel range
- Hydraulically adjustable longitudinal and lateral inclination
- 8-channel radio remote control 12 or 24 volts for fully hydraulic use of weed brush
- Height-adjustable support wheel 200 mm x 80 mm
- 3/4" flow-control valve for hydraulic flow rates > 75 l/min.
- Various brush attachments

Equipment variants

based on the hydraulic connections available on the carrier vehicle

1 x double-acting (snap-in function recommended)	1 x double-acting + electric switch valve 12 V	2 x double-acting	4 x double-acting or 1 x double-acting with radio remote control
-			
-	-	-	
-	-	-	



Radio remote operation for convenient control in the cab



Heavy brush head with protective side guard



Universal attachment with lateral pivoting



Hydraulically adjustable grade and transverse slope, on option also mechanical adjustment possible



Mechanical or hydraulic swivel arm for treatment of large surfaces





ADLER-Heater
Don't give weeds
a chance!

Damage to weeds
visible after only
1 to 2 days.

ADLER-Heater 1000 / 1400
Front mounting

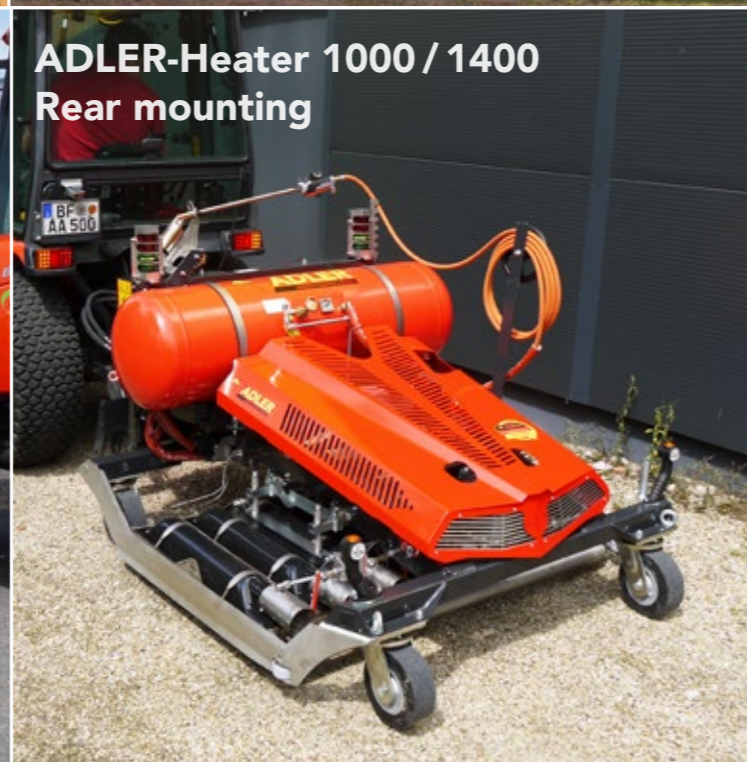


ADLER-Heater Flexi



ADLER-Heater 500

ADLER-Heater 1000 / 1400
Rear mounting



What is thermal weed control?

Thermal weed control methods can be used on practically all surfaces and always work according to the same principle. The application of thermal energy to the surface of the plants destroys the cell structure of the vegetative fibre. The water which is transported from the root to the leaf cells evaporates and makes the plant dry up after a short time already. Furthermore, proteins are denatured whereby vital processes such as photosynthesis are being interrupted. As a result the damaged plant material dies.



Infrared radiation produced by the approx. 1000-°C ceramic infrared emitter destroys the cell structure and protein of the surface of the plant and reduces the germination capacity of existing seeds. Damage to weeds are recognizable after only 1-2 days.

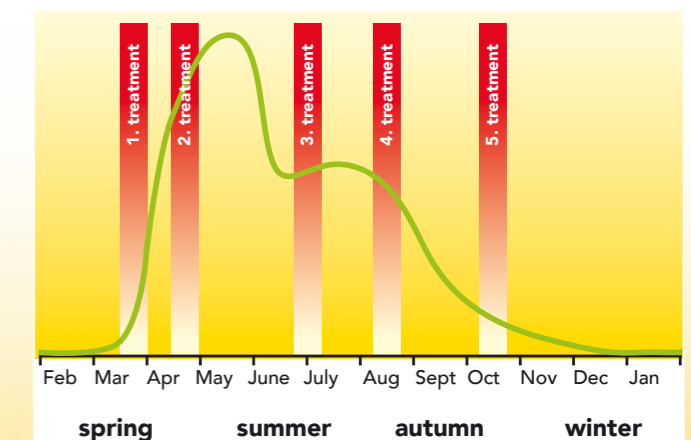
The temperature required to achieve this damaging effect is only approx. 60 - 70 °C.

Repeated treatment continuously weakens the root system, making it difficult to generate new growth. The plant dies as a result.

This method is therefore particularly effective for young plants and annual weeds. Long-term successful control of root herb-spreading depends on the regular repetition of treatment. How often this procedure must be repeated depends on the individual requirements of the user.

Effect on seeds:

When exposed to direct heat, the seeds lose their germination capacity or are even stimulated to germinate. When treated promptly, fresh weed growth can therefore be sustainably controlled.



Example of growth patterns of grasses and possible treatment periods. Actual treatment intervals depend heavily on the type of weed, vegetation and the surface to be treated.

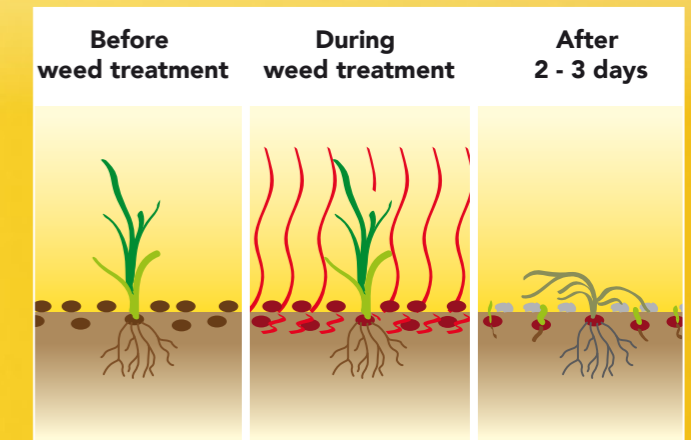


Diagram of ADLER Heater process steps

The ADLER Heaters use sophisticated infrared technology and offer a number of advantages compared to other methods.

- Clear restriction of operating area
- No noise exposure
- Low gas consumption
- Extremely short set-up times



ADLER-Heater Flexi 350 / 500

ADLER
infrared
technology

100%
without
chemistry

KTL
& powder

Developed
& produced in
Germany

Profile ADLER-Heater Flexi 350 / 500

- Clear limitation of operating area
- Plug and Play: Connect gas cylinder, light and get going
- Flexible use in tight spaces (traffic islands, bus stops, etc.) thanks to single-axle design and swivel-mounted burner
- Compact dimensions for ease of transport
- Practically noiseless operation

Accessories:

- Hand-held burner for difficult-to-access spots

Technical specifications:

ADLER-Heater		Flexi 350	Flexi 500
Working width	mm	350	500
Dimensions in operating position	mm	L 1,500 x W 352 x H 800 - 1,300	L 1,500 x W 536 x H 800 - 1,300
Dimensions in transport position	mm	L 869 x B 352 x H 610	L 869 x B 536 x H 610
Number of infrared emitters		2	3
Ignition		electrical	electrical
Weight (without gas cylinder)	kg	43	51
Thermal output	kW	13	19,5
Infrared emitter fuel		11 kg- / 5 kg-propane gas cylinder	11 kg- / 5 kg-propane gas cylinder
Capacity per gas cylinder	h	ca. 10 / ca. 4.5	ca. 7 / ca. 4.5
Working speed	km/h	1.0 - 1.5	1.0 - 1.5
Area performance	m²/h	up to 525	up to 800



The front wheel ensures that the infrared emitter is positioned at the optimum working height.



Optimum weight distribution makes the Flexi comfortable to work with.



By tilting the emitter to the right or left, even edges can be easily treated.



The ADLER-Heater Flexi in working widths 350 mm and 500 mm.



The Flexi folds quickly and its compact design makes it fit in almost any boot.



The hand-held burner allows treatment of even difficult-to-access terrain.



ADLER-Heater 500 / 750 E

ADLER
infrared
technology

100%
without
chemistry

KT
& powder

Developed
& produced in
Germany

Profile ADLER-Heater 500 / 750 E

- *Silent, thermal weed control using infrared light and electric drive*
- *Low gas consumption and low CO₂ emissions*
- *No sweeping action and no damage to the ground*
- *Suitable for water-bound pathways and surfaces*

Accessories:

- Hand-held burner for difficult-to-access spots

Technical specifications:

ADLER-Heater		500 E	750 E
Working width	mm	500	750
Basic device dimensions	mm	L 1,495 x W 532 x H 829	L 1,495 x W 703 x H 829
Number of infrared emitters		3	4
Weight (without gas cylinder or hand-held burner)	kg	108	128
Ignition		electrical	electrical
Drive		electrical	electrical
Battery power supply	Ah	17	17
Battery capacity	h	2 - 5	2 - 4
Infrared emitter fuel		11 kg-propane gas cylinder	11 kg-propane gas cylinder
Gas consumption	kg/h	up to 2.3 (without hand-held burner)	up to 3.0 (without hand-held burner)
Capacity per gas cylinder	h	app. 5	appo. 3.5
Working speed	km/h	bis 2	bis 2
Noise exposure	dB	< 40	< 40
Area performance per hour	m ²	up to 1,000	up to 1,500
Overall cost/m - including 4-year depreciation - 5 hours/day - 100 days/year	€	0.02	0.02



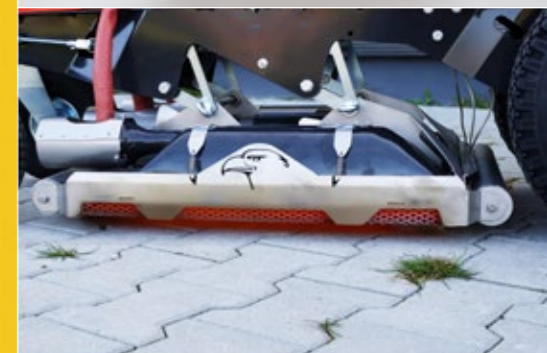
Banishes weeds for the long term



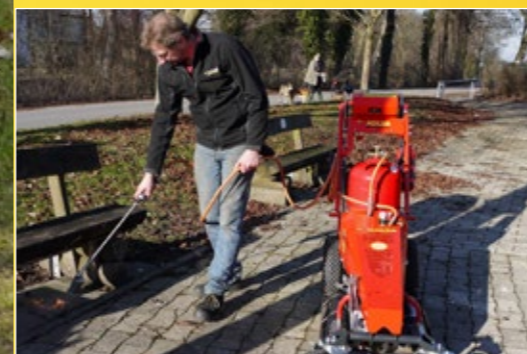
Large drive wheels and differential transmission ensure optimum manoeuvrability and effortless work



Infrared radiation without naked flame



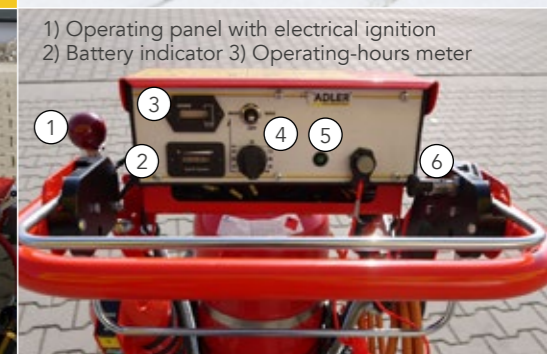
Height-adjustable infra box to adapt to road, path and surface conditions



Hand-held burner for difficult-to-reach corners and edges



1) Backwards/forward drive 2) Safety cable to stop motor 3) Securing mount 4) On/off switch 5) Hose bracket



1) Operating panel with electrical ignition 2) Battery indicator 3) Operating-hours meter

4) Speed controller 5) LED for monitoring burner 6) Motor brake



ADLER-Heater 1000 Light

ADLER
infrared
technology

100%
without
chemistry

KT
& powder

Developed
& produced in
Germany

Profile ADLER-Heater 1000 Light

- For thermal treatment of large surfaces
- Light design, perfectly suitable for carrier-vehicles with little lift capacity
- Rear carrier with liquefied petroleum gas tank or for propane gas bottles – also suitable for transport on loading platforms
- Standard equipment includes radio remote control

Accessories:

- Hand-held burner for difficult-to-access corners and angles
- Hose reel drum

Technical specifications:

ADLER-Heater		1000 Light
Working width	mm	1,000
Dimensions (without hitch system)	mm	L 1,406 x W 1,064
Number of infrared radiators		6
Radiator surface	mm	L 556 x B 1.058
Weight incl. hitch system (without rear carrier)	kg	approx. 230
Ignition		electric by radio remote control
Connectors required		12 volt (1 x attachment)
Combustible of infrared radiators		LPG liquefied petroleum/propane gas
Gas consumption	kg/h l/h	approx. 5 approx. 12
Range per gas charge kg/h		approx. 6 working hours (gas tank 85 l)
Working speed	km/h	up to 2
Noise exposure (without vehicle)	dB	< 40
Area performance per hour	m ²	2,000
Overall cost		0.01
- incl. 4-year depreciation	€/m ²	
- 5 hours/day		
- 100 days/year		

Available from
July 2019



With a weight of approx. 230 kg (front mounting) incl. hitch-system it's perfectly suitable even for smaller communal vehicles.



Optimum weight distribution allows an application on smaller carrier-vehicles.



Incl. manual height adjustment of infrared box and signal light for operational checks



Solid 85 l gas tank for universal rear-mounting and for pickups/flat-bed vehicles.



Side-marker lamps and an easy-to-access filler neck for liquefied petroleum gas are integrated in the rear-carrier.



Radio remote control incl. suction cup holder and emergency switch.



ADLER-Heater 1000 / 1400



Profile ADLER-Heater 1000 / 1400

- For the thermal processing of large surfaces
- Suitable for water-bound pathways and surfaces
- Equipped with radio remote control as standard
- ADLER plug & play:
 1. Easy to attach to many carrier vehicles
 2. Connect to 12-volt supply
 3. Start via radio remote control and get going

Accessories:

- Hand-held burner for difficult-to-reach corners and edges

Technical specifications:

ADLER-Heater		1000	1400
Working width	mm	1,050	1,400
Dimensions (without mount)	mm	L 1,600 x W 1,127	L 1,600 x W 1,462
Number of infrared emitters		6	8
Radiated surface	mm	L 740 x W 1,039	L 740 x W 1,381
Weight (without gas or mount)	kg	about 370	about 490
Ignition		Electric via radio remote control	
Connections required	Electrical	12 volt (1 x attachment device)	
	Hydraulic	1 x double-acting (for hydr. side shift)	
Infrared emitter fuel		LPG autogas	
Gas consumption	kg/h	about 6	about 8
	l/h	about 14	about 18
Coverage per gas filling		approx. 8 working hours (120 l gas tank)	approx. 8 working hours (150 l gas tank)
Working speed	km/h	2 - 3	
Noise exposure (without vehicle)	dB	< 40	
Area performance per hour	m²	2,000 - 3,000	2,800 - 4,200
Overall cost/m²			
- including 4-year depreciation €		0.01	0.01
- 5 hours/day			
- 100 days/year			



Indicator for height adjustment and signal lamps for infra box operating control



Also suitable for smaller vehicles with front mount (also for rear attachment as an option)



Available on option: Hand-held burner kit incl. 15 m-hose reel



Radio remote control with suction bracket and emergency off button



Impact-resistant heavy-duty wheels to protect infra box



Side fill inlet for LPG autogas



Hydraulic side shift 20 cm to the left and right



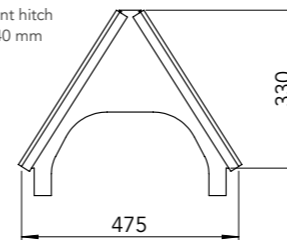
Mount options for your ADLER

Developed
& produced in
Germany

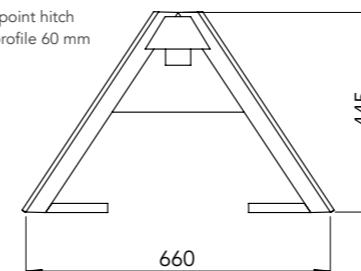
Attachment plate DIN 76060, size 3
or 5, for front mounting, incl. hydr.
cylinder and levelling system for an
optimum adaptation to the
ground contours

Hitch triangles:

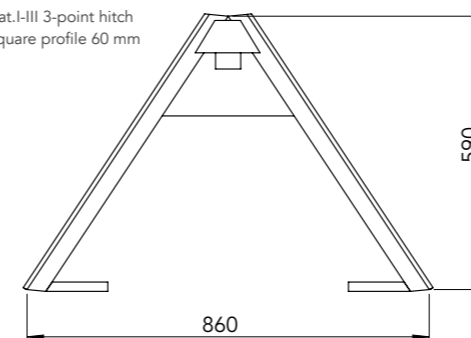
Municipal 3-point hitch
Square profile 40 mm



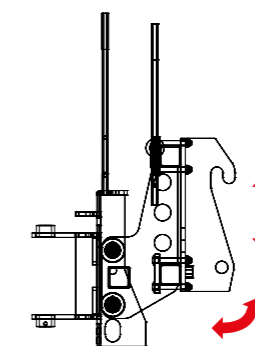
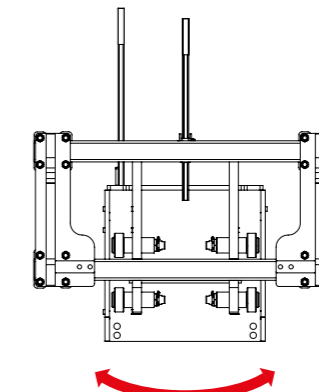
Cat. 0 3-point hitch
Square profile 60 mm



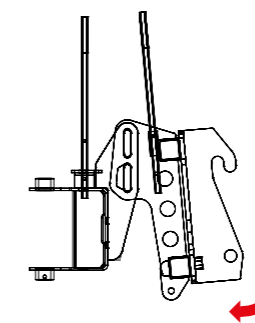
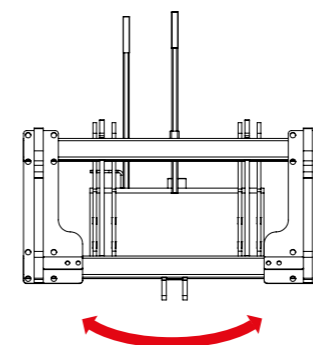
Cat. I-III 3-point hitch
Square profile 60 mm



Universal attachment incl. roller guide system and with 3D levelling:



Yard loader attachment incl. 3D levelling:



Unimog Attachment incl. lifting system acc. to
DIN 76060



Wheel loader hitch with roller guide system and
3D levelling



Combined wheel loader/fork lift attachment incl.
roller guide system and 3D levelling



Communal triangle



Three-point linkage, CAT I/II



Yard loader attachment

The ADLER-Drill Rig Range:

Ideal for well drilling – geothermal drilling – geological exploration drilling – probe drilling

Save time

- Quickly transported
- Short set-up times
- Start work without delay

Reduce costs

- Maximum price-performance
- Low investment costs
- Easy maintenance

Impress customers

- Gentle on gardens
- Fits through standards doors
- Engine with noise insulation

Suitable for trailers, approved up to 3.5 t

Transportation on lorry required starting from series B 50

Can pass through door-ways

Safety device around rotating pipe fitted as standard

Cathodic dip coating with subsequent powder coating – extremely corrosion-resistant

Developed & produced in Germany

You will find more information in our Drill Rig Range brochure (PDF download)

B 15

Kubota engine: 15 HP
Extraction force: 9 kN
Weight: app. 1.3 t

down to 25 m!

B 25

Kubota engine: 25 HP
Extraction force: 12 kN
Weight: app. 1.6 t

down to 50 m!

B 50

Deutz or Kubota engine: 50 HP
Extraction force: 23 kN
Weight: app. 2.5 t

down to 100 m!

STAGE **V** certified

B 75

Deutz engine: 75 HP
Extraction force: 23 kN
Weight: app. 3.5 t

down to 150 m!

STAGE **V** certified

Now also available: **B75 pro**

Attachment Drill Rig ABL

For excavators from 1.5 to 30 t.
We also manufacture in compliance with your wishes!

Breaking new ground ...

Powerful drilling solutions for highly confined spaces.



Our Drill Rigs are used for well drilling, geothermal drilling and geological exploration drilling. We can also provide you with solutions for almost all types of piling operations. The low weight and compact design enable you to reduce your investment costs to a minimum. Our technology is innovative, allowing you to achieve excellent performance with minimal effort. We equip our B-series Drill Rigs with customised features to meet your requirements.

We offer you four compact Drill Rigs in different performance categories to suit the required drill depth and soil characteristics.

**Ideal for well drilling,
geothermal drilling,
geological exploration drilling
and probe drilling**

The powerful B-series compact Drill Rigs allow you to make drill holes even in locations which are difficult to access. With a transport width between 88 and 95 cm and a height of just 196 cm, these Drill Rigs will fit through standard doors, enabling you to access any building. The standard chain chassis ensures that you reach your drilling location even on difficult terrain. Our small and compact Drill Rigs also ensure that you can travel to the site easily right from the start: All you need is a car trailer to transport them to the site.



Save time

- Quickly transported
- Short set-up times
- Start work without delay

Reduce costs

- Maximum price-performance
- Low investment costs
- Easy maintenance

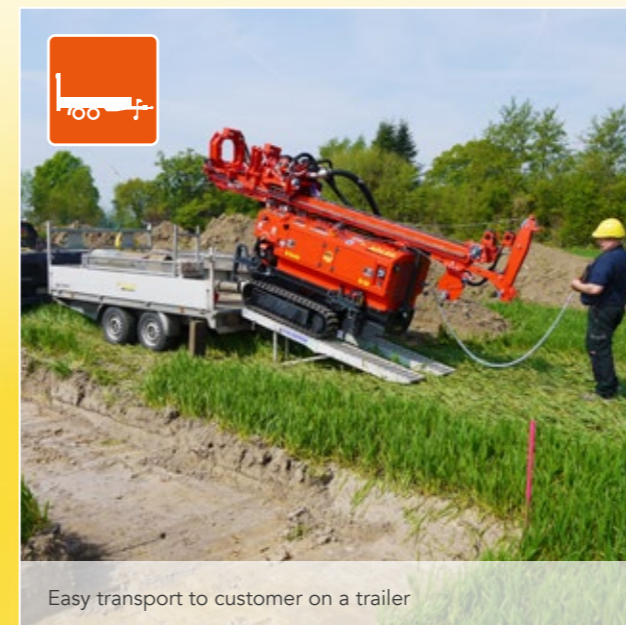
Impress customers

- Gentle on gardens
- Fits through standards doors
- Engine with noise insulation

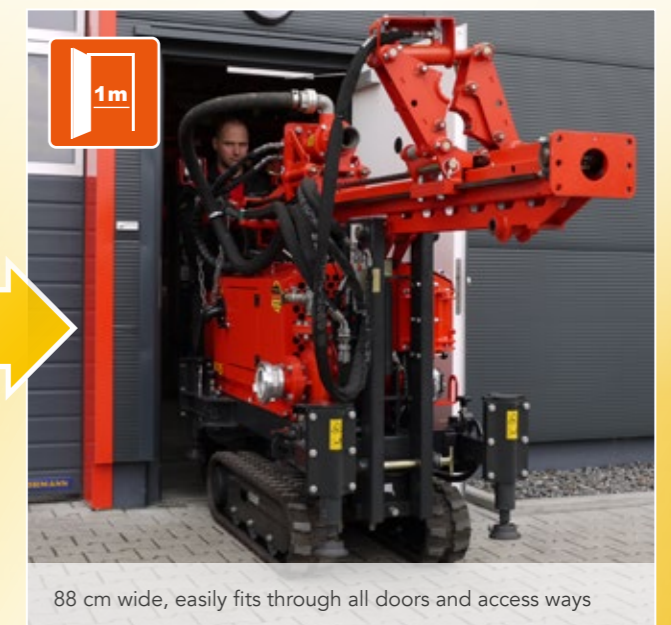
**Developed
& produced in
Germany**



You will find more information in our Drill Rig Range brochure (PDF download)



Easy transport to customer on a trailer



88 cm wide, easily fits through all doors and access ways



Extend hydraulic parking stands and raise mast



Without much effort the B-series is ready for operation in only a few minutes



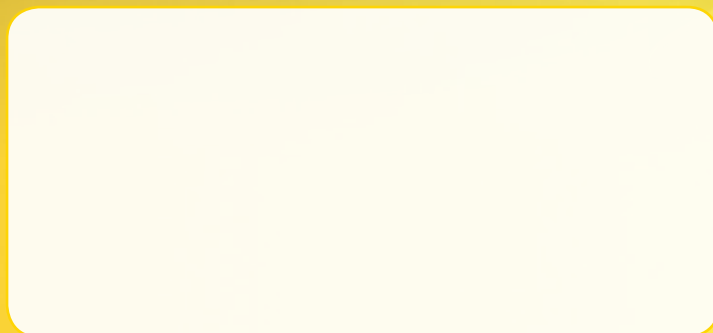
PRODUCING QUALITY.

Experience

Innovation

Expertise

Developed
& produced in
Germany



ADLER Arbeitsmaschinen GmbH & Co. KG

An den Bahngleisen 28 · 48356 Nordwalde · Germany
Tel.: +49 (0) 2573 979 990 · Fax: +49 (0) 2573 979 99 40
info@adler-arbeitsmaschinen.de

www.adler-arbeitsmaschinen.de

All information in this brochure is based on the best knowledge available to us and has been carefully checked. No liability is accepted.
2019/03 (GB) We reserve the right to modify dimensions, weight and technical data.
Conceptual design & layout: www.werbeagentur-willers.de